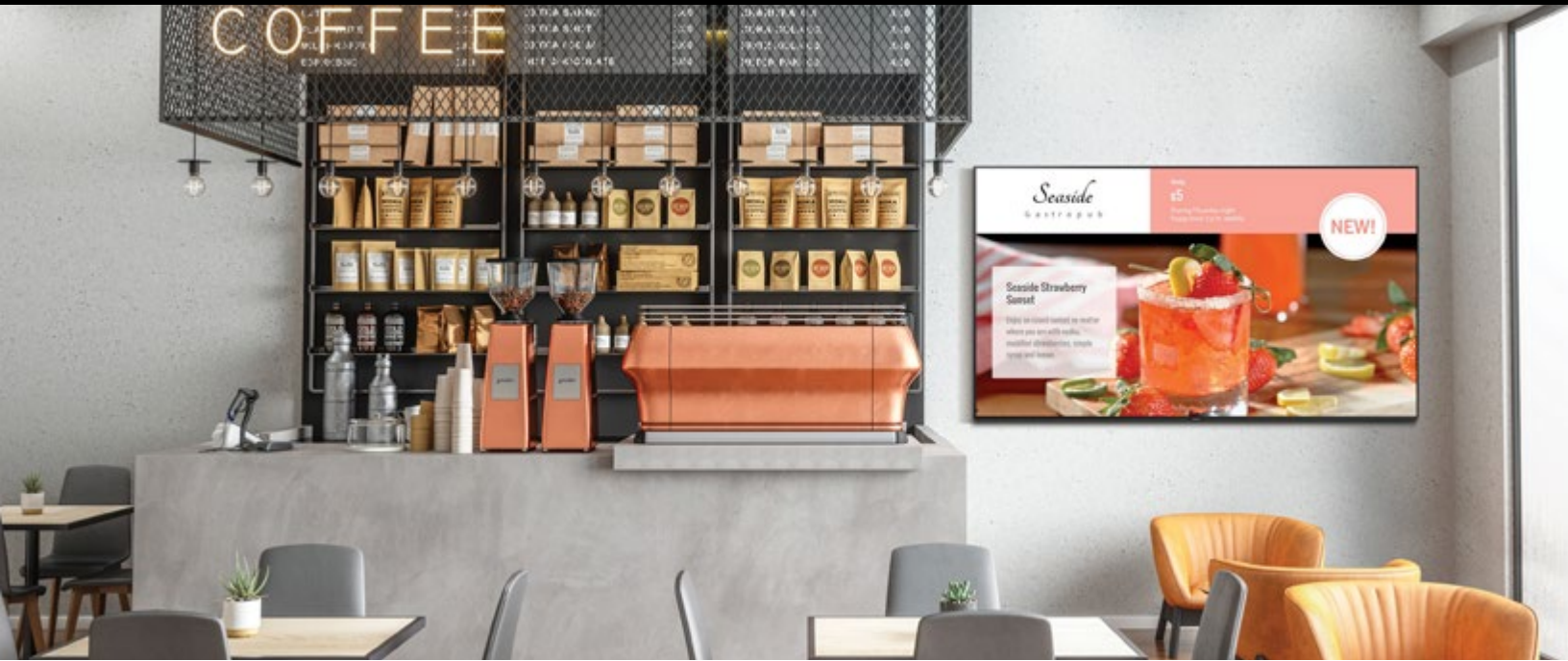


43.0"	BE43T-H	55.0"	BE55T-H	70.0"	BE70T-H
50.0"	BE50T-H	65.0"	BE65T-H	75.0"	BE75T-H



A stunning 4K TV with customizable possibilities.

A Pro TV Offering 4K and Easily Customizable Content

With the Samsung Pro TV, content becomes as dynamic as your customers. The Samsung Pro TV series offers powerful Crystal UHD picture quality, powered by a Crystal 4K processor. Every piece of content is rich, colorful and full of fine detail. Changing content is quick and easy. In three easy steps, you can upload dynamic content right from your phone or tablet with the Samsung Business TV app. You can count on Samsung's Pro TV with a 16/7 operating time, while a 3-year warranty adds peace of mind. Do more with your TV with the Samsung Pro TV series displays.



Key Features

4K^{UHD} Powerful Crystal UHD Picture Quality

With an ultra-fast Crystal 4K processor and Crystal UHD resolution, you'll take your content to the next level. Content will be displayed with more accurate and smoother color in brilliant 4K, no matter the source.

HDR Every Detail Counts

With the Samsung Pro TV's high dynamic range, you can showcase every detail in a wide spectrum of colors. Content comes to life, even in dark scenes.

—|— Slim and Modern

The sleek, elegant and minimalistic design draws customers into the screen content from any angle, and with a super-slim bezel, Samsung's Pro TV keeps the focus on your content.

3^{YR} A TV You Can Count On

Featuring an impressive 3-year warranty, the Samsung Pro TV is built to operate reliably 16 hours a day, 7 days a week. Day in and day out, you can depend on your Samsung Pro TV to play what you want, when you want it.

Plug and Play Content You Want

Show what your customers want to watch with built-in tuners and multiple input ports. Your Samsung Pro TV can also play your favorite content from YouTube as well. From the big game to prime-time news, broadcasted by cable or by external media player, you're in control.

CMS Not a Content Expert? No Problem

With the intuitive Samsung Business TV app (available for Android and iOS) you can create and upload dynamic, eye-catching content to multiple TVs from your smartphone or tablet in three easy steps.

- Slideshow feature allows you to change your message anytime.
- More than 100 customizable templates sorted by industry and content type, including L-bar layouts, embedded motion, seasonal sales, and other pre-designed promotions.
- Display your own photos from your smartphone or tablet.

AUTO Don't Worry About It

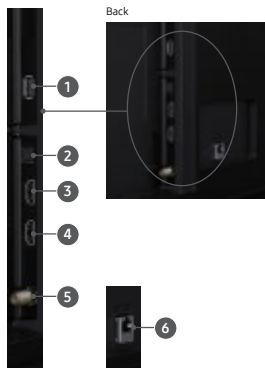
An on/off timer automatically ensures the Samsung Pro TV operates during business hours, while a PIN code protects your settings.

Samsung BET-H Series Pro TV

		BE43T-H	BE50T-H	BE55T-H	BE65T-H	BE70T-H	BE75T-H	
Panel	Screen Size	43"	50"	55"	65"	70"	75"	
	Panel Type	60Hz E-LED BLU	60Hz E-LED BLU	60Hz E-LED BLU	60Hz E-LED BLU	60Hz E-LED BLU	60Hz E-LED BLU	
	Resolution	3,840 x 2,160	3,840 x 2,160	3,840 x 2,160	3,840 x 2,160	3,840 x 2,160	3,840 x 2,160	
	Brightness (Typ.)	250 nits	250 nits	250 nits	250 nits	250 nits	250 nits	
	Contrast Ratio (Typ.)	4,700:1	4,700:1	4,700:1	4,700:1	4,700:1	4,700:1	
	Viewing Angle (H / V)	178° / 178°	178° / 178°	178° / 178°	178° / 178°	178° / 178°	178° / 178°	
	Response Time (G-to-G)	8ms	8ms	8ms	8ms	8ms	8ms	
	Display Colors	16.7 M	16.7 M	16.7 M	16.7 M	16.7 M	16.7 M	
	Color Gamut	72%	72%	72%	72%	72%	72%	
	Operation Hours	16/7	16/7	16/7	16/7	16/7	16/7	
Connectivity	Input	Video	HDMI x 2	HDMI x 2	HDMI x 2	HDMI x 2	HDMI x 2	
		USB	USB x 1	USB x 1	USB x 1	USB x 1	USB x 1	
		RF	1 Terrestrial / 1 Cable / 0 Satellite	1 Terrestrial / 1 Cable / 0 Satellite	1 Terrestrial / 1 Cable / 0 Satellite	1 Terrestrial / 1 Cable / 0 Satellite	1 Terrestrial / 1 Cable / 0 Satellite	1 Terrestrial / 1 Cable / 0 Satellite
	Output	Audio	Optical	Optical	Optical	Optical	Optical	
	External Control	Wi-Fi / Bluetooth	RJ45	RJ45	RJ45	RJ45	RJ45	
Design	Bezel Type	3 Sides Bezel-less, Slim Look	3 Sides Bezel-less, Slim Look	3 Sides Bezel-less, Slim Look	3 Sides Bezel-less, Slim Look	3 Sides Bezel-less, Slim Look	3 Sides Bezel-less, Slim Look	
	Stand Type	Quad Pod	Quad Pod	Quad Pod	Quad Pod	Quad Pod	Quad Pod	
Power	Type	Internal	Internal	Internal	Internal	Internal	Internal	
	Power Supply	AC110-120V 50/60Hz	AC110-120V 50/60Hz	AC110-120V 50/60Hz	AC110-120V 50/60Hz	AC110-120V 50/60Hz	AC110-120V 50/60Hz	
	Power Consumption	Max	120 W	125 W	140 W	190 W	225 W	230 W
Typical		0.5 W	0.5 W	0.5 W	0.5 W	0.5 W	0.5 W	
Mechanical	Dimensions	Set without Stand	37.9" x 22.0" x 2.3"	44.0" x 25.3" x 2.4"	48.4" x 27.8" x 2.4"	57.0" x 32.7" x 2.4"	61.9" x 34.4" x 2.4"	65.9" x 37.7" x 2.4"
		Set with Stand	37.9" x 24.8" x 7.9"	44.0" x 28.0" x 9.8"	48.4" x 30.6" x 9.8"	57.0" x 35.6" x 11.2"	61.9" x 37.8" x 13.4"	65.9" x 41.1" x 13.4"
		Package	42.6" x 26.4" x 5.6"	49.8" x 30.7" x 5.9"	54.6" x 33.2" x 6.2"	63.2" x 37.9" x 7.2"	68.7" x 40.8" x 7.5"	72.4" x 44.0" x 7.8"
	Weight	Set without Stand	179 lbs.	251 lbs.	30.6 lbs.	45.4 lbs.	53.4 lbs.	67.0 lbs.
		Set with Stand	18.3 lbs.	25.6 lbs.	31.3 lbs.	46.1 lbs.	54.5 lbs.	67.9 lbs.
		Package	26.0 lbs.	35.3 lbs.	43.0 lbs.	63.1 lbs.	75.4 lbs.	92.4 lbs.
	VESA	Screw Size	M8	M8	M8	M8	M8	M8
Screw Depth		23 mm	23 mm	23 mm	20-22 mm	20-22 mm	20-22 mm	
Special Features	Media Player	USB Media Player	USB Media Player	USB Media Player	USB Media Player	USB Media Player	USB Media Player	
	BizTV App (Android, iOS)	Yes	Yes	Yes	Yes	Yes	Yes	
	On / Off Timer	Yes	Yes	Yes	Yes	Yes	Yes	
	Autorun Signage (App Auto-Launch)	Yes	Yes	Yes	Yes	Yes	Yes	
	App Pre-Installation	Yes	Yes	Yes	Yes	Yes	Yes	
	OTN On / Off	Yes	Yes	Yes	Yes	Yes	Yes	
	Lock	Security Lock	Yes	Yes	Yes	Yes	Yes	Yes
		Panel Button Lock	Yes	Yes	Yes	Yes	Yes	Yes
		USB Port Lock	Yes	Yes	Yes	Yes	Yes	Yes
		Mobile Connection Menu	Yes	Yes	Yes	Yes	Yes	Yes
Accessory	Included	Remote Control, Batteries, User Manual, Power Cable, Stand	Remote Control, Batteries, User Manual, Power Cable, Stand	Remote Control, Batteries, User Manual, Power Cable, Stand	Remote Control, Batteries, User Manual, Power Cable, Stand	Remote Control, Batteries, User Manual, Power Cable, Stand	Remote Control, Batteries, User Manual, Power Cable, Stand	
Service	Standard Warranty	3 Years	3 Years	3 Years	3 Years	3 Years	3 Years	

Connectivity

1. USB
2. Audio Out - Optical
3. HDMI In 1
4. HDMI In 2
5. RF Tuner
6. RJ45



Without Stand



With Stand



Back

